

# Commercial Solar Energy Storage System Solution



## Product description

This product adopts a standardized design and is compatible with power from 30kW to 120kW. It can be arranged outdoors and can be used in areas such as grid tied areas with transformers or power distribution rooms in industrial and commercial buildings. In grid-connected mode, it can stabilize load fluctuations, peak shaving, and provide backup power in off- grid mode.

## Module integrated energy storage device

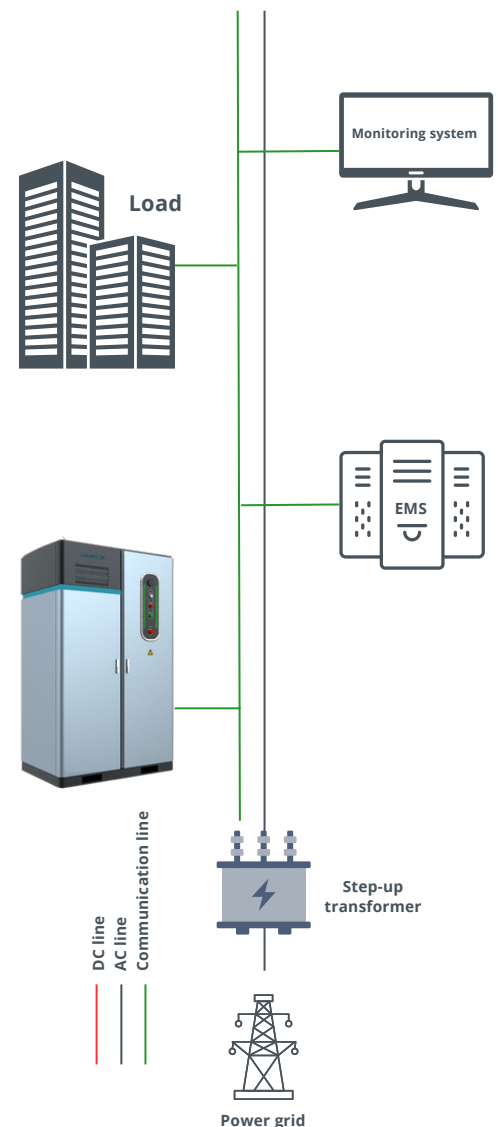


## Features

- A. Intelligent operation, the whole process does not require manual intervention.
- B. Flexible configuration, free combination of power and energy.
- C. Intelligent air-conditioning management, more energy-efficient operation.
- D. Dynamic expansion of capacity, free choice of AC-side parallel or DC-side parallel.
- E. Fast switching between parallel and off-grid, the switching time is less than 10ms.
- F. APP remote monitoring.

## Technical Parameters

	Item	Unit	parameter
Basic parameters	model	/	HZ-CES-60kW-129kWh
	weight	kg	1800
	Dimensions width*depth*height	mm	1470*950*2300
System parameters	Rated output power	kW	30/60
	Rated battery energy	kWh	129
	Battery Type	/	Lithium iron phosphate battery
	grid voltage range	V	380±15%
	grid frequency range	Hz	49.5~50.2Hz
	system efficiency	%	>86.2%
	power factor	/	±0.99
	Full power charge and discharge switching time	ms	<10ms



# Commercial Solar Energy Storage System Solution



## Equipment List

Name	Model	Unit
Power cabinet	HZ-CES-L (1500(W)x950(D)x2260(H)mm)	1
Heptafluoropropane fire detection tube type fire extinguishing device	TH-J-Q-3/2.5/150-PAVLN	1
Bidirectional AC/DC Converter Module	30kW	2
Molded case circuit breaker	NDM2-250L/3310 125A/	2
	Shunt voltage AC230V	
Power Supply	DDR-30G-12	1
Display Panel Kits	704mm*254mm*15mm, Material: +	1
	silver anodized, PMMA+UV	
SOC display PCB board	HNAC_SOC	1
Air conditioner	AC1000(C101)	2
SIM Card	4G	1
Wireless Router	ZR2520S2	1
battery module	2P12S Module, 120Ah Cell	14
Filter	TXP9803A	6
Fan	F2E-120S-230	2
Control system	EMS	1
High voltage box	Compatible with 2P12S module, with black start function	1
Copper bar	TMY-30*4	
Auxiliary material	Primary and secondary lines, terminals, micro-breaks, indicator lights, etc.	1
EMS Software		1



Ampere Plus OÜ  
Vesivärava 50, Tallinn  
10152, ESTONIA

Tel: +372 5770 2007  
Email: info@ampere.ee  
**ampere.ee**



In partnership with:

**Lenercom**®

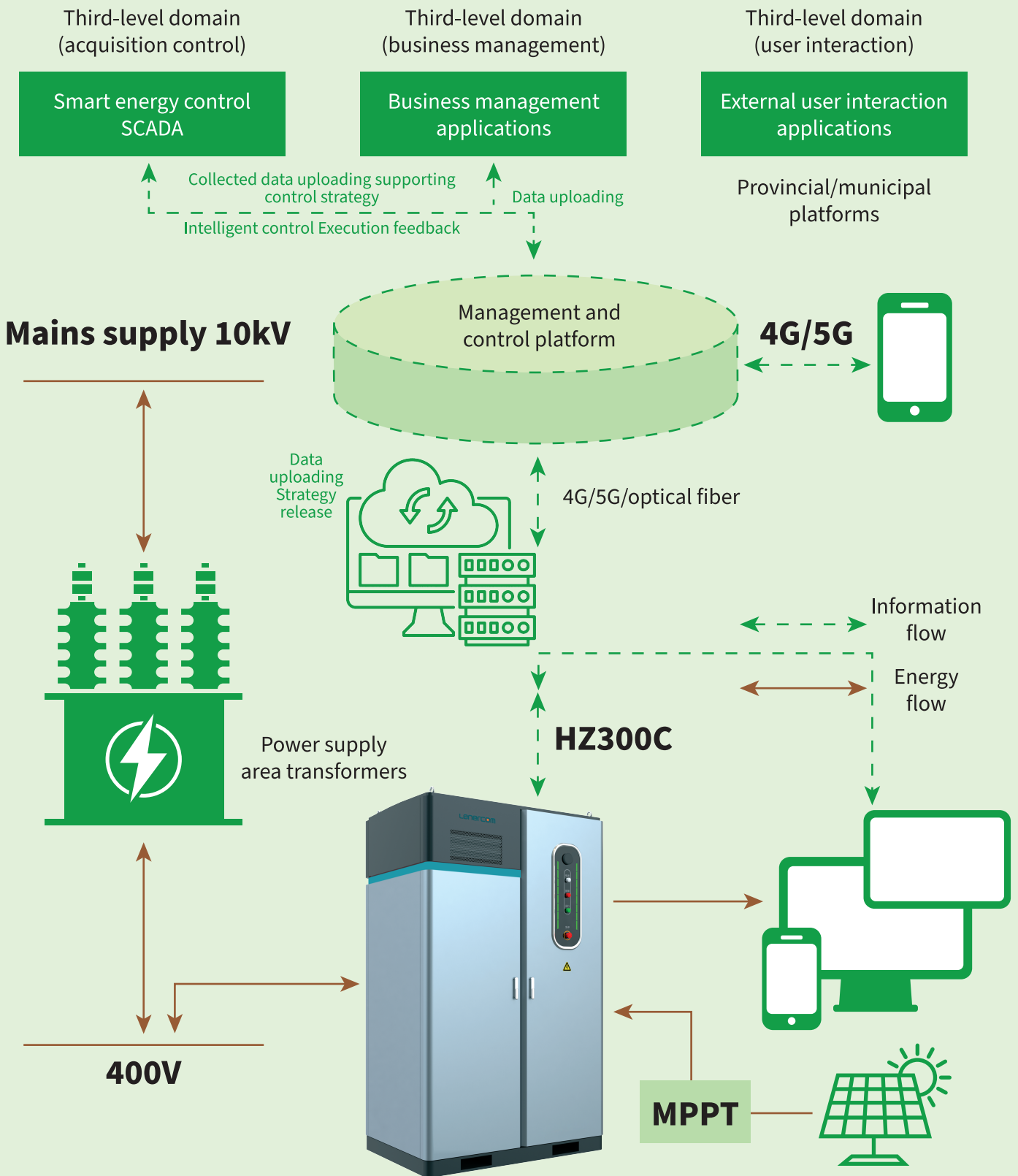


Fig. 3-2 Block Diagram of Product System